

# Thank you to our Conference Sponsors

## PLATINUM



## SILVER



## BRONZE



## SUPPORTER/EXHIBITOR





**Urban Land Institute** **Building Healthy Places Initiative**

# The Legacy of Building Healthy Places

4:15 p.m. – 5:15 p.m.

*Moderator*

**Gadi Kaufmann**

RCLCO

**Tony Green**

the Pinehills

**Paul Johnson**

Rancho Mission Viejo

**Randall W. Lewis**

Lewis Operating Company

**Robert M. Sharpe**

Rancho Sahuarita

**Daniel C. Van Epp**

Newland Real Estate Group

Sponsored by



#ulihealth



# **BUILDING HEALTHY PLACES**



**Urban Land  
Institute**

## **The Legacy of Building Places: Where We've Been; Where We're Headed**

**February 20, 2014**

# Agenda – The Legacy of Building Healthy Places

## **Moderator:**

- **Gadi Kaufmann**, Managing Director/CEO, RCLCO

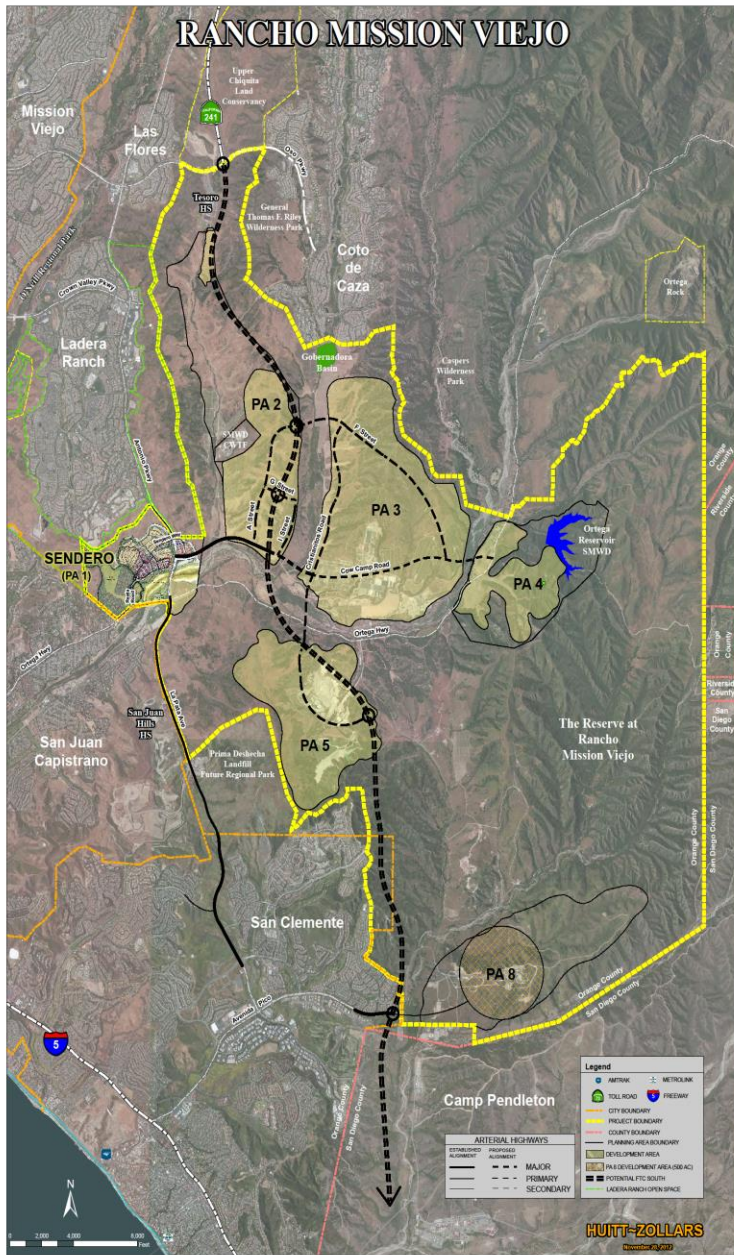
## **Panelists:**

- **Paul Johnson**, Senior Vice President, Rancho Mission Viejo
- **Randall Lewis**, Executive Vice President, Lewis Group of Companies
- **Robert Sharpe**, President, Sharpe & Associates
- **Dan Van Epp**, Executive Vice President, Newland Real Estate Group
- **Tony Green**, Managing Partner, The Pinehills

## **Discussion Topics:**

- Best Practices
- Measuring Success
- Models of Effective Partnerships
- Call to Action

**Paul Johnson**  
**Rancho Mission Viejo**



# A NEW AGELESS PARADIGM

## Overview

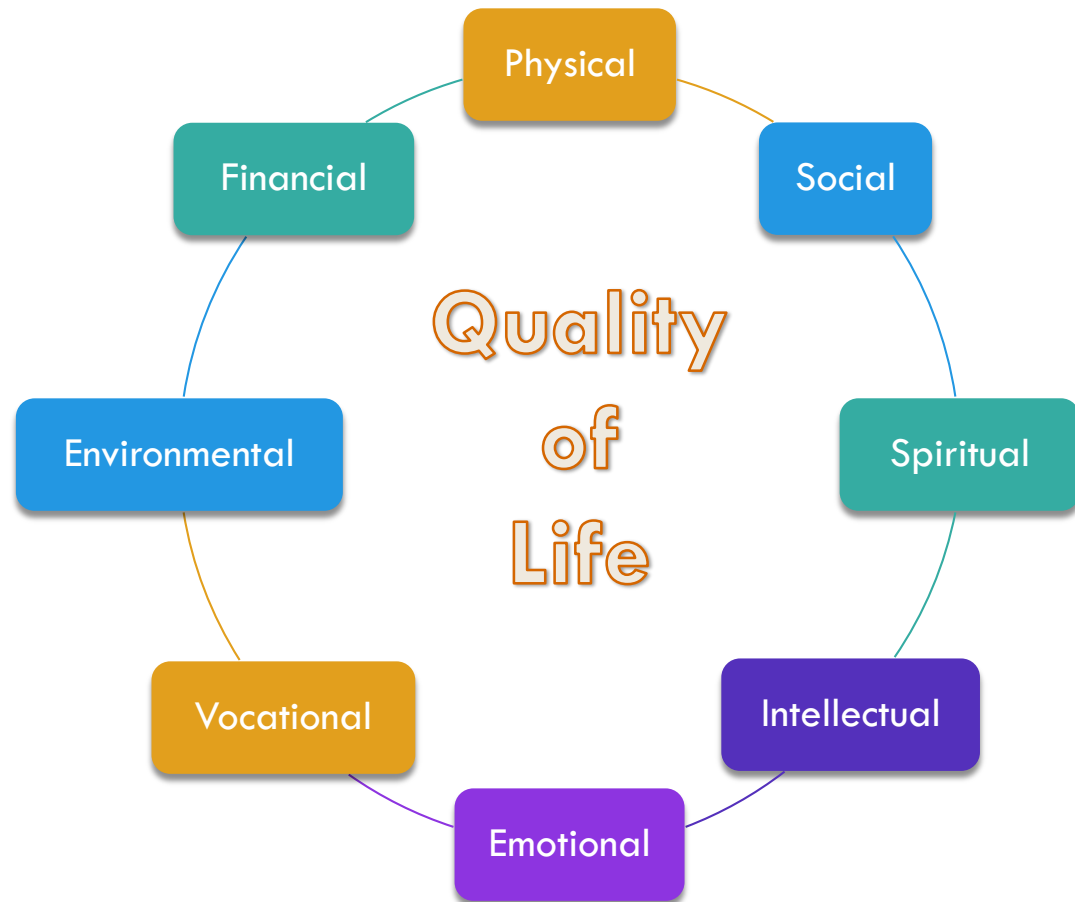
- 23,000 acres
- 75% = The Reserve at Rancho Mission Viejo
- 25% = Residential and mixed use villages
  - 14,000 homes (including 6,000 55+ new-home residences)
  - 8,000 Market Rate homes
  - 6,000 55+ homes
  - Up to five million square feet of non-residential uses

# BUILDING HEALTHY PLACES

## Focus on two areas:

- 1. Community (Urban Design)**
  - Neighbor crafting
  - Intergenerational
  - Amenities/Trails/Open Space
- 2. Services (Soft Infrastructure)**
  - Lifestyle
    - Build social
    - Content anchors community
  - People care

# EIGHT DIMENSIONS OF WELLNESS







ranchlife

# Planning Realms

Uniquely Rancho Mission Viejo

Masterplan Essentials

55+ Essentials

S.O.C. Amenities & Partnerships

**Play**

Outdoor/  
Recreation

**Exploration**

Learning/Nature

**Friendship**

Programs/Social

**Balance**

Mind/Body/Spirit  
Wellness



# “WHERE RANCH LIFE COMES TO LIFE”

## Buyer Engagement

- Neighbor Meet n’ Greets
- Wine & Design Landscape Workshops
- Getting Started – Welcome Gift

## Lifestyle Programs & Events

- Community-wide celebrations and festivities
- Recreational and educational programs
- Fitness
- Resident led clubs
- Program collaboration:
  - The Reserve at Rancho Mission Viejo
  - Arroyo Trabuco Golf Course
  - Tree of Life Nursery
- The “Bar”



*“Provide opportunities for personal expression, connecting family and friends, people with similar interests as well as celebrating The Ranch traditions”*

# SOFT INFRASTRUCTURE

## PROGRAMS TOUCH 150,000 ANNUALLY

	Rancho Santa Margarita 1986	Ladera Ranch 1999	Rancho Mission Viejo 2013
# of Homes	13,000+	8,000+	200
# of Participants Key Events	35,000/annually	50,000/ annually	600*
# of Participants Programs/Classes	8,000/annually	12,000 annually	n/a
# of Participants Sports Fields	5500+ annually	5,000+ annually	n/a
# of Participants Resident-led Clubs	n/a	85	1 <sup>st</sup> Club Formed
Sponsored Community Events w/ City	19,000/annually**	n/a	n/a

\*50 move-ins by Dec. 1, 2013  
 100 move-ins occurred in December alone  
 435 sales to date

\*\* Community Association Property/Central Park

# Sendero Amenities

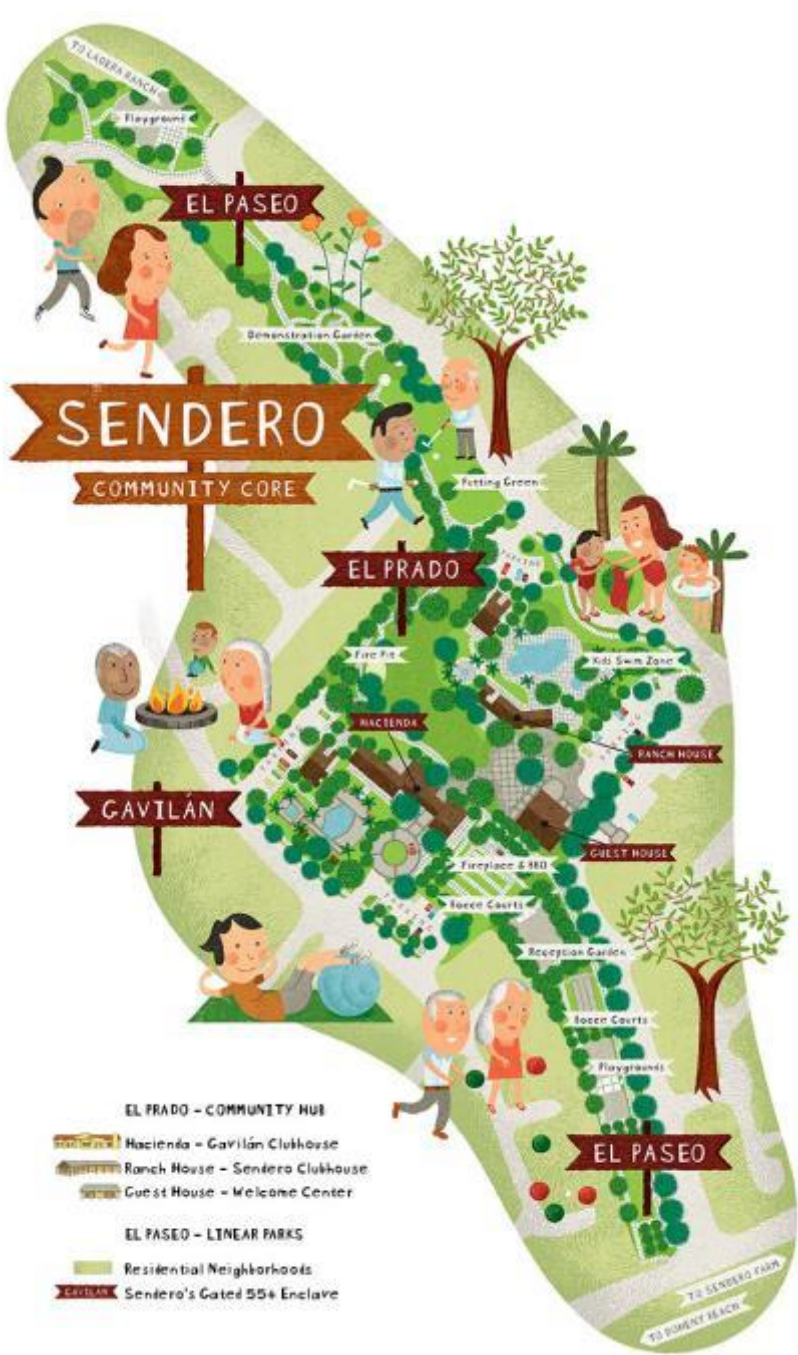




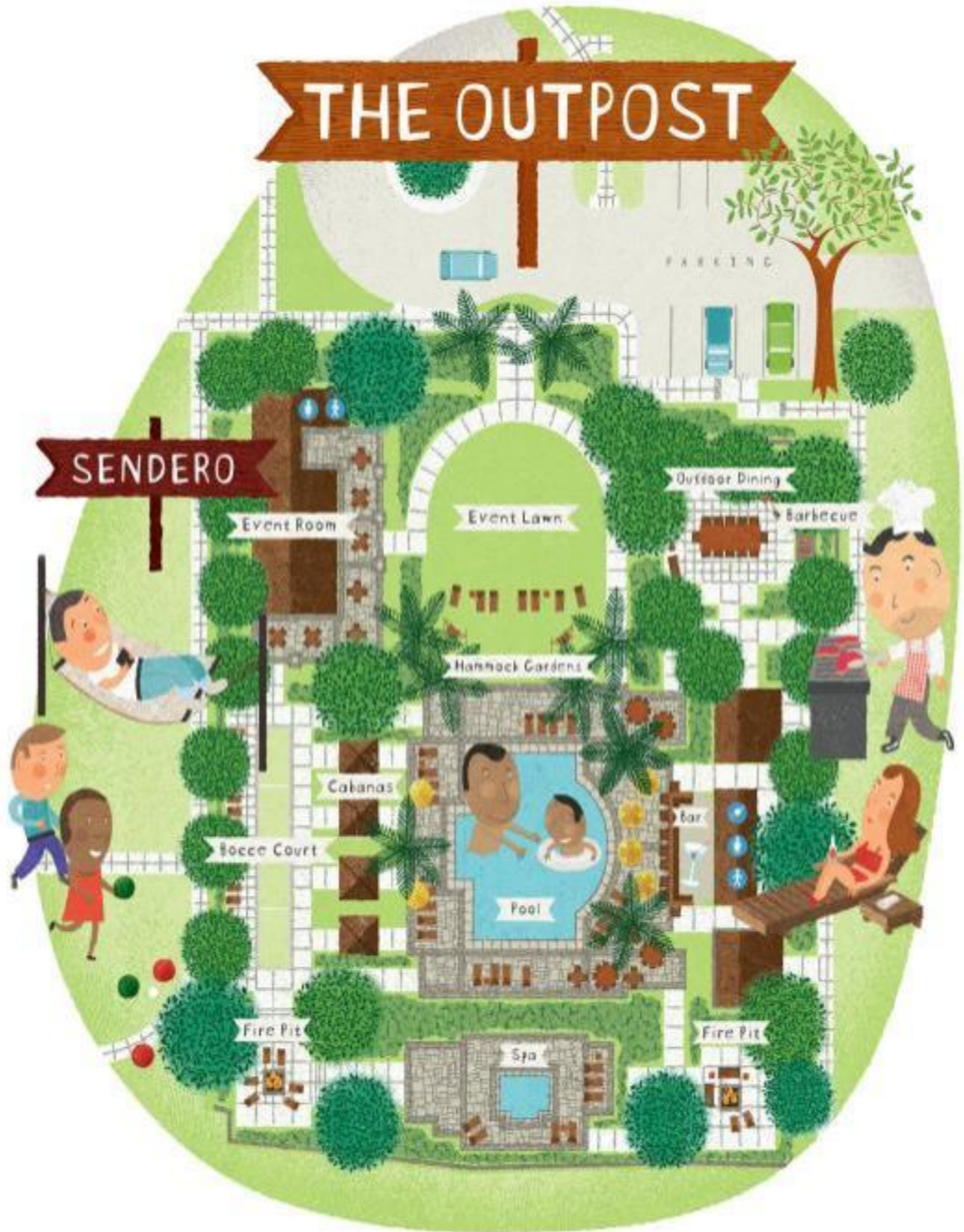
The Outpost

Recreation Core

- Ranch House: MR Clubhouse
- Hacienda: AQ Clubhouse
- Guest House: Community Hall

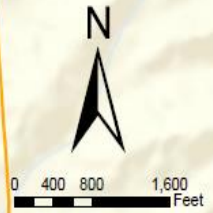


- EL PRADO - COMMUNITY HUB**
- Naciencla - Cavilán Clubhouse
- Ranch House - Sendero Clubhouse
- Guest House - Welcome Center
- EL PASEO - LINEAR PARKS**
- Residential Neighborhoods
- Cavilán - Sendero's Gated 55+ Enclave



### Legend

- Planning Area Boundary
- NEV/LSV off road trail (Proposed Biking - Class 1)
- NEV/LSV share a widened bike lane separate from the travel lane for cars
- NEV/LSV share the lane with cars
- San Juan Creek Trail
- -- Centerlines



2/10/2014  
R:110115504\GIS\115504\EX\INEV.mxd

## NEV/LSV Circulation Plan



# HACIENDA

## 55+ CLUBHOUSE

- 9,153 SF
- Amenities
  - Living Room w/  
bar
  - Fitness Center
  - Classrooms
  - Yoga Room
  - Art Room
  - Pool/Spa
  - Cabanas
  - Bocce Court
- Social Programming





# RANCH HOUSE

## ALL AGE CLUBHOUSE

- 3,829 SF
- Amenities
  - Activity Room
  - Fitness Room
  - BBQ Patio
  - Pool w/ swim lanes
  - Spa
- Social Programming



# GUEST HOUSE

## COMMUNITY HALL

- 4,719 SF
- Amenities
  - Community Room
  - Catering Kitchen
- Social Programming



# THE OUTPOST

## RECREATION CENTER

- 1,272 SF
- Event Room w/ bar
- Catering Kitchen
- Outdoor Bar
- Outdoor dining w/ BBQ
- Pool, Spa, Cabanas
- Fire pit
- Bocce court
- Outdoor Movie Screen
- Hammock garden



**Randall Lewis**

**Lewis Group of Companies**

***Bicycles and helmets are provided for free checkout at all Lewis Apartment Communities.***



**Lewis Group of Companies**

***Community gardens with individual organic and non-organic plots are available for rental, as well as a tool shed containing tools, gloves and other equipment available for free use.***



**Lewis Group of Companies**

***Each year we sponsor a health and wellness fair with local hospitals, medical providers, first responders and others.***



**Lewis Group of Companies**

***In addition to normal apartment fitness equipment, we feature dance rooms with active programming for all ages.***



**Lewis Group of Companies**



**Bob Sharpe**

**Sharpe & Associates, Inc.**



# Rancho Sahuarita : A Healthy Place





# Rancho Sahuarita : A Healthy Place





# Rancho Sahuarita : A Healthy Place



**Tony Green**

**The Pinehills**



**The Pinehills**  
Plymouth, MA





**The Pinehills**  
Plymouth, MA





**The Pinehills**  
Plymouth, MA





## A VARIETY of Reasons to Enjoy Fall!



### FLASH FICTION

Ever Heard of it?  
A NEW Writers Group is forming.  
See back page for a fun read.

### EXHALE

Have you tried  
**SUNSET**  
Meditation?

### It's Back!

The Craft Fair Returns on the 26th!

Pinehills Landowners Association, Inc.

9:30am Conditioning & Toning  
**Thursdays**  
8:00am Sculpt & Sweet  
10-11:15am Yoga for Everyone  
(ages 6+)  
**Fridays**  
7:25-8:25am GRT  
8:30-9:00am Conditioning/Toning  
9:00-10:00am Stretching  
**Saturday**  
9:00-10:00am Pilates



**The Pinehills**

The Stonebridge Club  
55 Stonebridge Road  
Plymouth, MA 01950  
508.209.1355

## October 2013

	Monday	Tuesday	Wednesday	Thursday	Friday	Saturday
1		Art Studio 10-Noon (C) Chamber Music Practice Noon-2pm Positive Thinkers 2pm (C) Chess Playing 2pm Bunco 6pm (C) Social Knitting 7pm Appreciating Wine 7pm (C)	Road Cycling 8:30am Welcoming Committee 10:30am Duplicate Bridge 1pm (C) Ping Pong 2-4pm weekly Discussion Group 4-5pm Plymouth County Connections Then & Now 6:30pm (C) Glee Club 7-9pm (C) weekly	Bird Brains Item Chess Playing 2pm (C) N2N: Lean Forward After Loss 3pm Drop in Tennis 6pm Singles Game Night 7pm (C)	Friday Bridge Club 1pm (C) Ping Pong 2-3pm weekly N2N: Lean Forward After Loss	Road Cycling 8:30am SHINE 9am (C) Homeowner Orientation 9:30am Line Dancing 10am
2						
3						
4						
5						
6	Social Stitching & More 10:30am-noon Ping Pong 2-4pm weekly Literary Women 2:30pm N2N: Bag It Movie & Discussion 7pm	Bird Brains Item Art Studio 10-Noon (C) Writers Group 10am Chamber Music Practice Noon-2pm Chess Playing 2pm Social Knitting 7pm Appreciating Wine 7pm (C)	Road Cycling 8:30am Quilt Club 1pm Duplicate Bridge 1pm (C) Ping Pong 2-4pm weekly Discussion Group 4-5pm Glee Club 7-9pm (C) weekly	Quilt Club 1pm (WV) Chess Playing 2pm (C) A Moment in Time History Group 4pm (C) Drop in Tennis 6pm Singles Dinner 6pm Great Courses 7pm (C) Pie Bake Meeting 7pm	Friday Bridge Club 1pm (C) Ping Pong 2-3pm weekly Trivia Night 6:30pm	Road Cycling 8:30am Line Dancing 10am
7						
8						
9						
10						
11						
12						
13	Social Stitching & More 10:30am-noon Ping Pong 2-4pm weekly Wine Lovers Group 7pm	Art Studio 10-Noon (C) Chamber Music Practice Noon-2pm Chess Playing 2pm Social Knitting 7pm Appreciating Wine 7pm (C)	Road Cycling 8:30am Duplicate Bridge 1pm (C) Ping Pong 2-4pm weekly Civil War Study Group 7pm (C) Predict 15 Caucus 8:30pm Whee Everyone Went to the Movies 8:30pm Glee Club 7-9pm (C) weekly	Chess Playing 2pm (C) Well Read Book Club 2:30pm (C) N2N: Why Worry 2:30pm Drop in Tennis 6pm Her's Group 7pm	Friday Bridge Club 1pm (C) Ping Pong 2-3pm weekly Paint Drink Create Event 6:30pm (C)	Road Cycling 8:30am Line Dancing 10am <b>Fitness Room CLOSED for Cleaning 7am-5pm</b>
14						
15						
16						
17						
18						
19						
20	Social Stitching & More 10:30am-noon Ping Pong 2-4pm weekly Mystery Book Club 2pm N2N: Bag It 7pm Master Swim Group 7pm	Art Studio 10-Noon (C) Chamber Music Practice Noon-2pm Hungry for Change 1pm (C) Chess Playing 2pm Singles Pagetowers 4:15pm (WV) Social Knitting 7pm Technology Group 7pm	Road Cycling 8:30am Duplicate Bridge 1pm (C) Ping Pong 2-4pm weekly Rainbow Club at BBC in Sandwich 7pm Concepts in Buddhism 7pm Glee Club 7-9pm (C) weekly	Chess Playing 2pm (C) N2N: Lean Forward After Loss 3pm American It 4p Drop in Great Cou	Friday Bridge Club 1pm (C) Craft Fair Set-up Noon-5pm	Road Cycling 8:30am <b>annual air ipm or Live a day)</b>
21						
22						
23						
24						
25						
26						
27	Social Stitching & More 10:30am-noon Ping Pong 2-4pm weekly Merry Book Club 3pm Stonebridge Readers 7pm	Art Studio 10-Noon (C) Chamber Music Practice Noon-2pm Chess Playing 2pm Social Knitting 7pm Sunset Meditation 8pm	Duplicate Bridge 1pm (C) Ping Pong 2-4pm weekly Glee Club 7-9pm (C) weekly Concepts in Buddhism 7pm Women's Group 7pm	Chess Pin Drop in Great Cou Pinecon Tick-O-Treating 5:30pm		
28						
29						
30						

**The Pinehills**  
Plymouth, MA



**The Pinehills**  
Plymouth, MA

*"If you cannot be the poet, be the poem." David Carradine*





  
**The Pinehills**  
Plymouth, MA



  
**The Pinehills**  
Plymouth, MA



# The Pinehills

Plymouth, MA





the market  
The South Shore's First  
**HEALTHY MARKET**






**The Pinehills**  
Plymouth, MA





Walk your  
inner dog.

ROUTE 3 EXIT 3 IN PLYMOUTH

The Pinehills 





**The Pinehills**  
Plymouth, MA





**Urban Land Institute** **Building Healthy Places Initiative**

# The Legacy of Building Healthy Places

4:15 p.m. – 5:15 p.m.

*Moderator*

**Gadi Kaufmann**

RCLCO

**Tony Green**

the Pinehills

**Paul Johnson**

Rancho Mission Viejo

**Randall W. Lewis**

Lewis Operating Company

**Robert M. Sharpe**

Rancho Sahuarita

**Daniel C. Van Epp**

Newland Real Estate Group

Sponsored by



#ulihealth

# Thank you to our Conference Sponsors

## PLATINUM



## SILVER



## BRONZE



## SUPPORTER/EXHIBITOR

